

Whitening Sensitivity



Pediatric Caries Risk



**Dayli**

Orthodontics



Adult Caries Risk



## The Many Faces of Relief and Protection.

Now you can strengthen teeth and provide relief for a host of indications with one simple solution: Dayli®, the prescription strength 1.1% neutral sodium fluoride brush-on gel with maximum fluoride protection (5,000 ppm) and sensitivity relief (5% potassium nitrate). From whitening sensitivity and high caries resistance, to white spots, polypharmacy, dry mouth and oncology, Dayli provides the relief and enamel strengthening your patients need. In fresh Mint and Grape. And backed by a 100% Satisfaction Guarantee.



PREVENTECH  4330-C Matthews Indian Trail Road • Indian Trail, NC 28079 • 800.474.8681 • 704.849.2416 • fax: 704.849.2417 • preventech.com

\* 100% Guarantee: If Dayli does not live up to your patients' standards, return it for a full refund.



**1.1% Neutral Sodium Fluoride Gel  
5% Potassium Nitrate**

### Hypersensitivity Therapy

- Pre- and post-bleaching patients
- Exposed dentin due to gingival recession
- Xerostomia
- Special needs patients

### Remineralization Therapy

- High caries risk children and adults
- Prevent, reverse and repair white spot lesions
- For crown and bridge work and orthodontic decalcification
- Reverses primary root caries lesions

Dayli's unique combination of remineralization and desensitizing agents provides a convenient one-step treatment for your patients. Dispensing Dayli from your office adds convenience and helps ensure immediate compliance to your treatment regime.

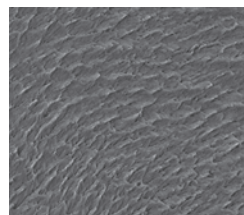
**Maximum Fluoride Protection.  
Maximum Sensitivity Relief.  
In a Crystal Clear Prescription  
Strength Brush-On Gel.**

- **Crystal clear, dye-free** formula won't stain teeth
- **Maximum fluoride protection (5,000 ppm)**
- **Rapid sensitivity relief (5% Potassium Nitrate)**
- **Sweetened with Xylitol, a proven plaque inhibitor**
- **Available in fresh Mint and Grape**

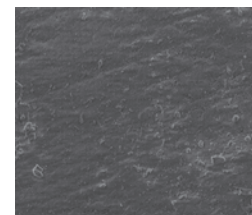
#### Maximum Fluoride Protection

	ppm
Dayli	5,000
Regular toothpaste	850-1,150
*MI Paste™	900

\*MI Paste is a trademark of GC America Inc.



**Etched Enamel**



**After Treatment with Dayli**



Item No.    Quantity

**Mint**    **6600135**    Case (12 tubes)



Item No.    Quantity

**Grape**    **6600235**    Case (12 tubes)

**Buy 3 Cases of Dayli...And Get a Fourth FREE!\***

Name of Practice \_\_\_\_\_ Address \_\_\_\_\_

City \_\_\_\_\_ State \_\_\_\_\_ Zip \_\_\_\_\_ Email \_\_\_\_\_

Just place your order for 3 or more cases of Dayli through the dealer of your choice. Then attach your invoice to this coupon and mail it to Preventech, so we can process your FREE case. Allow 4 to 6 weeks for delivery. Offer expires 12/31/16.

Mint     Grape

\*There's no limit to the number of cases an office may order, but at least three cases must be purchased on a single invoice.

Your satisfaction is 100% guaranteed. If any Preventech product does not live up to your standards, return it for a full refund. Customer Service: 1-800-474-8681

PREVENTECH®  4330-C Matthews Indian Trail Road • Indian Trail, NC 28079 • 800.474.8681 • 704.849.2416 • fax: 704.849.2417 • preventech.com