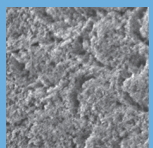


MAXimum value. MINimum splatter.

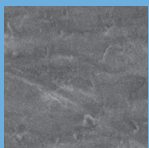
				
Great Stain Removal	✓	✓	✓	✓
Contains Fluoride	✓	✓	✓	✓
Good Splatter Control	✓	✓		
Easy Rinse-ability	✓	✓		
Calcium Phosphate	✓		✓	✓
Xylitol	✓			
Cost per 200 Cups*	\$48.29	\$50.99	\$57.29	\$65.70

*from www.HenrySchein.com, March 2013

When it comes to value in a calcium phosphate paste, MAXmin is off the charts.



Etched enamel before prophylaxis



Enamel after prophylaxis with MAXmin⁷

Studies show that saliva containing fluoride, calcium and phosphate can aid in the remineralization process.^{1,2,3,4} Plus, it just makes sense to put back the building blocks removed during a prophylaxis. But calcium phosphate pastes are not all alike: Sweetened with Xylitol, MAXmin^{5,6} doesn't splatter...rinses better (no chalky white residue left on the oral mucosa)...and costs less than the other leading brands. So if you're contemplating a move to a calcium phosphate paste, order MAXmin through your dental dealer or visit Preventech.com for a FREE SAMPLE.

maxmin
Prophy Paste with NuFluor®

¹ Barnes CM. *The Evolution of Prophylaxis Paste*. Dimensions Dent Hyg 2011;9(3): 50-52. ² Chow L, Wefel JS. *The Dynamics of De- and Remineralization*. Dimensions Dent Hyg 2009;7(2): 42-46. ³ Garcia-Godoy F, Hicks MJ. *Maintaining the integrity of enamel surface: The role of dental biofilm, saliva and preventive agents in enamel demineralization and remineralization*. J Am Dent Assoc 2008;139:25S-35S. ⁴ Featherstone J. *Delivery challenges for fluoride, chlorhexidine and xylitol*. BMC Oral Health 2006, 6(Suppl 1):S8 1-5. ⁵ Data on file. ⁶ The formula for MAXmin is patent-pending. ⁷ University of Maryland data on file. EnamelPro® is a registered trademark of Premier® Dental Products Company. Nupro® is a registered trademark of Dentsply International. Sensodyne® is a registered trademark of GlaxoSmithKline plc.





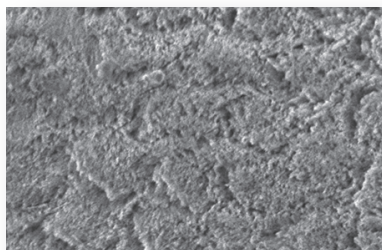
MAXmin Propy Paste with NuFluor...
Maximize your ability to clean and polish
while adding fluoride, calcium
and phosphate!

maxmin[®]
Propy Paste with NuFluor[®]

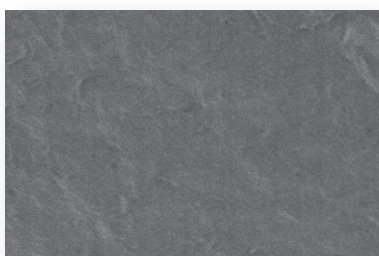
- Featuring NuFluor, our unique fluoride, calcium, and phosphate chemistry designed specifically for propy paste.
- Formulated with 1.23% fluoride ion.
- Sweetened with Xylitol.
- Optimized handling: Goes on easy without splatter.
- Tough on stains.
- Flash rinses to a clean finish.
- Available in great-tasting Mint, Cherry, Bubblegum and Orange Vanilla flavors and medium and coarse grits.
- Costs less than the leading brand.

Results after polishing for 10 seconds and rinsed after 1 minute.

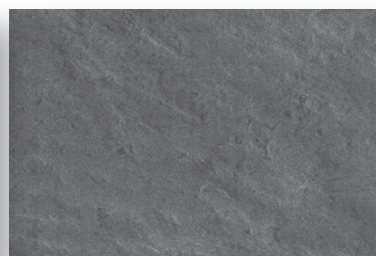
Etched Enamel* Before Propy








Propy with MAXmin*



Propy with ACP paste*



* University of Maryland Dental School

	Item No.	Grit	Quantity
	440023	Medium	Box 200
	440033	Coarse	Box 200
	440063	Medium	Box 200
	440073	Coarse	Box 200
	440093	Medium	Box 200
	440103	Coarse	Box 200
	440353	Medium	Box 200
	440363	Coarse	Box 200
	441113	Medium	Box 200
	441123	Coarse	Box 200

**Buy 4 Boxes of MAXmin,
Get 1 Box FREE!**

Name of Practice _____
Address _____ State _____ Zip _____ e-mail _____
City _____

Just place your order for four or more boxes of MAXmin through the dealer of your choice. Then attach your invoice to this coupon and mail it to Preventech, so we can process your FREE box. Allow 4 to 6 weeks for delivery. Select flavor and grit:


☐ Mint
 ☐ Bubblegum
 ☐ Medium
 ☐ Coarse

☐ Cherry
 ☐ Orange Vanilla
 ☐ Variety Pack

Offer expires 12/31/21. There's no limit to the number of boxes an office may order, but at least four boxes must be purchased on a single invoice. This offer may not be combined with any other offers.



Your satisfaction is 100% guaranteed. If any Preventech product does not live up to your standards, return it for a full refund. Customer Service: 1-800-474-8681

PREVENTECH  4330-C Matthews-Indian Trail Road • Indian Trail, NC 28079 • 800.474.8681 • 704.849.2416 • fax: 704.849.2417 • preventech.com